

50A / 63A

▶ DOOR/PANEL MOUNTING

 Technical Info (p.196)

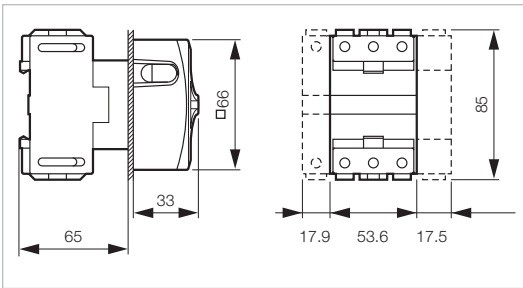
PADLOCKABLE PRESENTATION



0172201



0174201



50 A

- 3P
- 3P + NC/NO
- 4P neutral on left
- 4P + NC/NO

Yellow/Red Handle
Part Number

Grey Handle
Part Number

- 0172201
- 0172211
- 0172221
- 0172231

- 0174201
- 0174211
- 0174221
- 0174231

63 A

- 3P
- 3P+NC/NO
- 4P neutral on left
- 4P + NC/NO

- 0172301
- 0172311
- 0172321
- 0172331

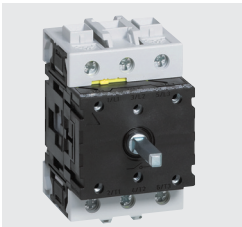
- 0174301
- 0174311
- 0174321
- 0174331

STANDARD VERSIONS IP40 RATED.

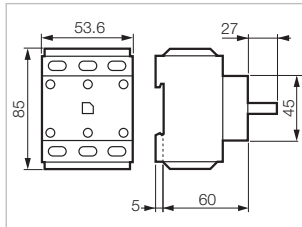
TO ORDER WITH IP65 GASKETS ADD -1 TO PART NUMBERS ABOVE.
IE. 0172201-1

COMPONENTS AND ACCESSORIES

Part Number



0172300



3-pole switch body without handle

- 50 A
- 63 A

- 0172200
- 0172300

Additional pole

- 50 A
- 63 A

- 0172275
- 0172375

Neutral pole

- 50 A
- 63 A

- 0172265
- 0172365

Junction block
Ground or Neutral

- 0172385

Auxiliary contact - 10A

NC/NO

- 0172179

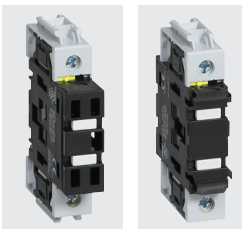
IP65 Seal Kit

- 0172267

Replacement Handle

- 66 - Yellow/Red
- 66 - Grey

- 0172601
- 0174601



0172375

0172385

