



# Sprinkler Release IP67

## Salwico MCP-SPR-A

### (GB)

Part no. 5200037-01A

G003007

System: Salwico Cargo, Salwico Cruise, Salwico Workboat,  
Salwico Yacht, Salwico RoPax, CS3000, CS3004, CS4000

## General Description

The MCP-SPR-A is a push button for outdoor environment and designed for the Salwico addressable fire alarm systems.

The selected material PC/ABS and the encapsulation, with ingress protection IP67, makes it very suitable for harsh environment.

Pressing the glass causing it to crack activates the sprinkler release. A protective plastic coating on the glass prevents operator injury.

An LED on the front of the push button indicates the fire alarm. The LED remains lit until the fire alarm has been reset on the fire alarm panel.

The push button can be tested with a special key included in the delivery.

The address of the push button is set with a DIP-switch.

The MCP-SPR-A provides short-circuit protection via connections 1–4 and no short-circuit protection via connections 5–8.

## Data

|                        |                    |
|------------------------|--------------------|
| Nominal voltage        | 34 VDC             |
| Working voltage        | 20–38 VDC          |
| Supervising current    | 0.2 mA             |
| Alarm current          | 2.5 mA             |
| Ingress protection     | IP67               |
| Temperature range      | -25°C to +70°C     |
| Ambient humidity       | 0 to 95% RH        |
| Material               | PC/ABS             |
| Colour                 | Blue, RAL3001      |
| Weight                 | 240 g              |
| Cable dimension        | Ø6–14 mm           |
| Certified according to | EN 54-11, EN 54-17 |

Spare glasses (10pcs.)

Part no. 5200077-00A

## Connection

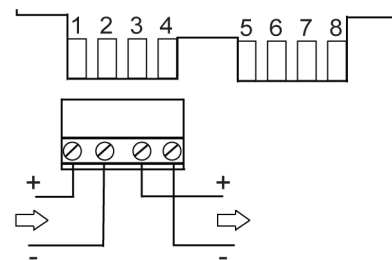
Connection of this call point depends on its function in the fire alarm system. The different alternatives are illustrated below.

### Connection with short-circuit protection



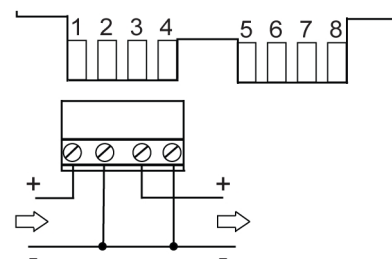
#### NOTE!

Connection with short-circuit protection is not applicable for system CS3000 or CS3004.



G003213

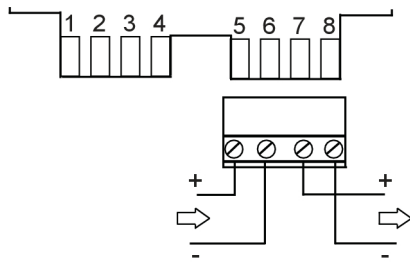
Figure 1. Connection with short-circuit protection for system Salwico Cargo, Salwico Cruise, Salwico Workboat, Salwico Yacht and Salwico RoPax



G003663

Figure 2. Connection with short-circuit protection for system CS4000

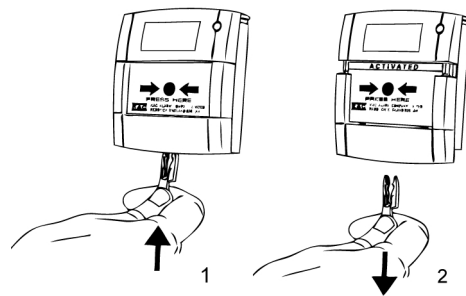
Connection without short-circuit protection



G003771

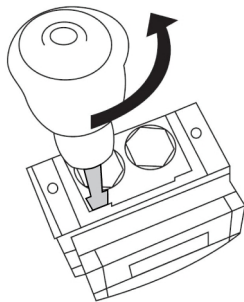
Figure 3. Connection without short-circuit protection for system Salwico Cargo, Salwico Cruise, Salwico Workboat, Salwico Yacht, Salwico RoPax, CS3000, CS3004, CS4000. Normal connection as spare part.

Test



G001773

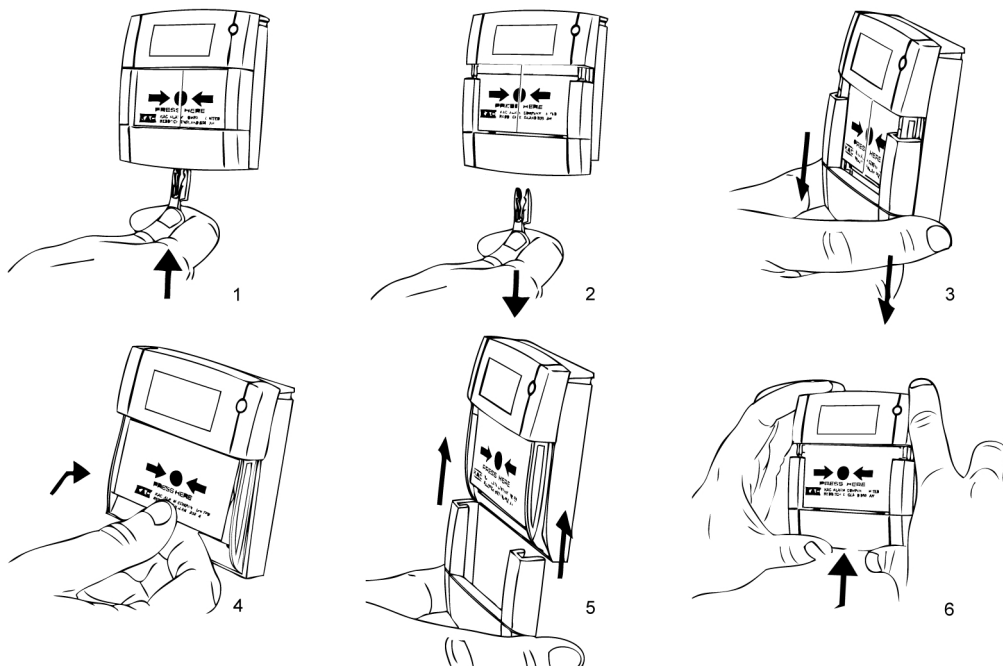
Cover removal



G003072

Remove the four cover fixing screws. Place the edge of a large flat bladed screwdriver into the slot between the cover and back box, as shown in picture, and gently twist until the latches are disengaged. Pull cover away from the back box.

Change Glass



G001779

## Dimensions (mm)

