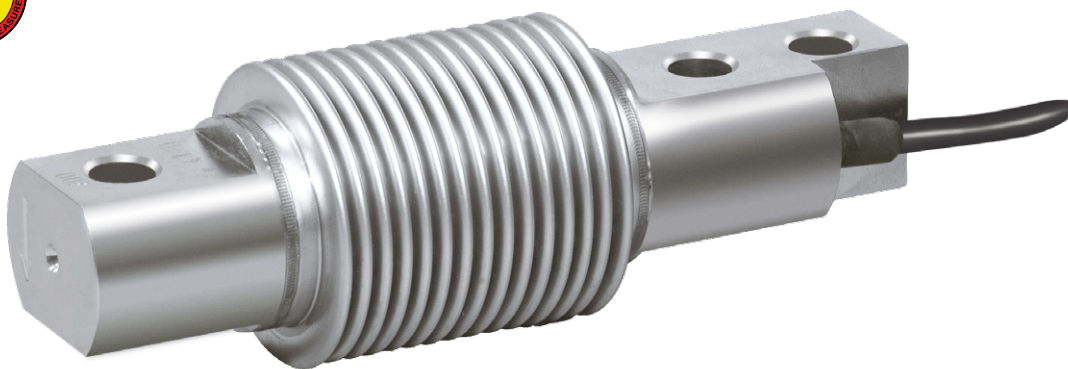


Bending Beam Load Cell F60X-6W with a Rated Load of 10 ... 500 kg

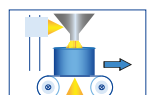


Performance Features

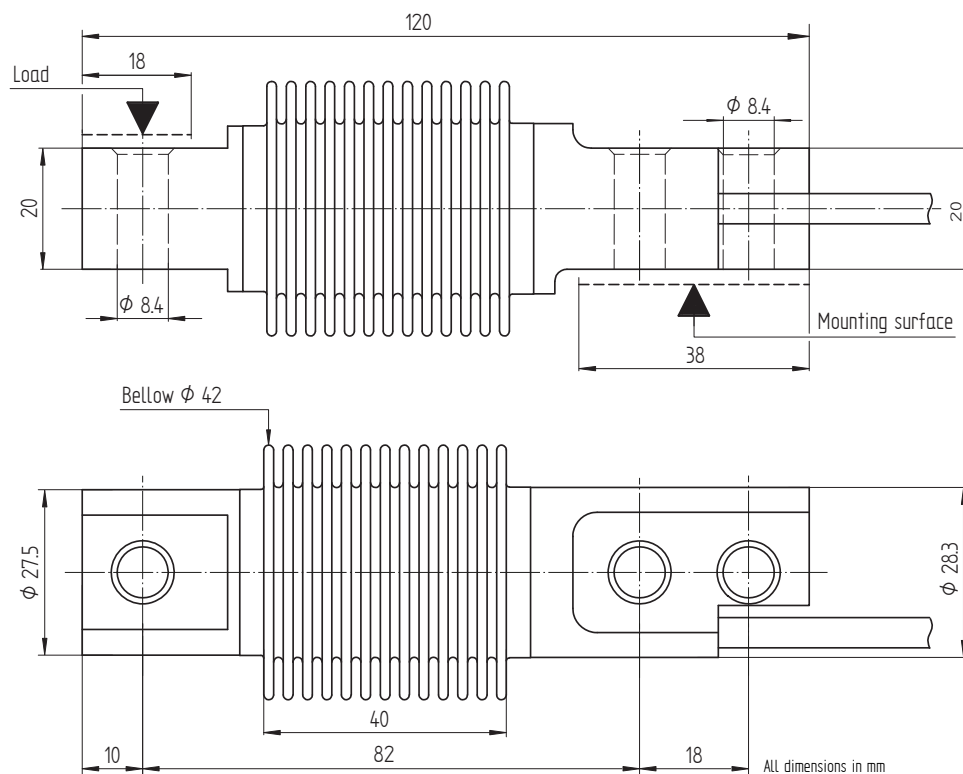
- Bending beam load cell made of stainless steel, hermetically welded with protection class IP68
- Up to 6000d d OIML R60 and 5000d NTEP approved
- 6-wire technology
- Ideally suited for any industrial weighing application where a high accuracy is needed
- Signal output with an increased accuracy of $\pm 0,05$ % from rated output (option)
- ATEX 2014/34/EU version for hazardous area (option)

Application

- Hoppers, tanks, mixers or conveyors
- Beverages and food
- Mining, metals and minerals
- Chemistry/Pharmaceuticals
- Waste management/recycling
- Packaging technology



Dimensions in mm



Warning

The F60X load cell installation requires mounting hardware with a minimum hardness of 53 HRC and screws of class 12.9

Article-No.	Version	Rated Load [kg]	n_{\max} [d OIML]	Weight [kg]
117828	C3 10e	10	3000	0.45
117829	C3 10e	20		
117830	C3 10e	50		
117831	C3 10e	100		
117624	C3 10e	200		
117832	C3 10e	300		
117623	C3 10e	500	6000	
117833	C6 10e	10		
117834	C6 10e	20		
117835	C6 10e	50		
117836	C6 10e	100		
117837	C6 10e	200		
117838	C6 10e	300		
117839	C6 10e	500		

Connection Assignment

Electrical Connection

Function	Wire Color	
Excitation (+)	Blue	●
Signal (+)	White	○
Signal (-)	Red	●
Excitation (-)	Black	●
Sensing (+)	Green	●
Sensing (-)	Gray	●

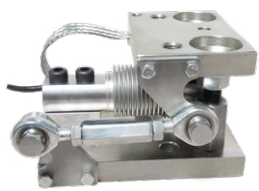


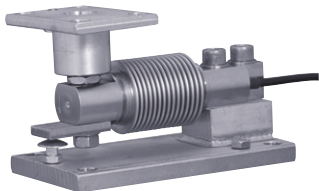
Technical Data

Type	F60X-6W		
Version		C3 10e	C6 10e
Rated load E	kg	10; 20; 50; 100; 200; 300; 500	
Maximum load for approved weighing E_{max}	kg	10; 20; 50; 100; 200; 300; 500	
Accuracy class OIML R60		C3	C6
Maximum numbers of load cell intervals n_{max}	d OIML	3000	6000
Minimum verification interval v_{min}	kg	E/10000	E/10000
Creep division factor $Z = E_{max}/2 \times DR$	-	3000	6000
Combined error	% E	±0.017	±0.008
Temperature coefficient of zero signal	% E/°C	±0.0014	±0.0014
Temperature coefficient of characteristic value	% E/°C	±0.0014	±0.0007
Load creep d_{cr, F} in 30 min.	% E	±0.025	±0.012
Zero balance	% E	±2.5	
Rated output at E C_{nom}	mV/V	2 ±1 % (option ±0.05 %)	
Rated range of excitation voltage B_{U, nom}	V	1 ... 15	
Input resistance R_e	Ω	385 ±20	
Output resistance R_a	Ω	350 ±5	
Insulation resistance R_{is}	MΩ/50V	5000	
Electrical connection		Cable, PVC, 3 m	
Rated temperature range B_{T, nom}	°C	-10 ... 40	
Operating temperature range B_{T, G}	°C	-20 ... 60	
Limit load E_{lim}	% E _{max}	150	
Breaking load E_b	% E _{max}	200	
Tightening torque	Nm	25	
Level of protection	EN 60529	IP68	
Material		Stainless steel	
Weight	kg	0.45	

Options

Article-No.	Description
107798	ATEX 2014/34/EU, IECEx: ex II 1 G/D, Ex ia IIC T6 Ga, Ex ia IIIC T80 °C Da, IP6X, -20 °C < Ta < +60 °C (zones gaz 0/1/2, dust 20/21/22)
115049	ATEX 2014/34/EU, IECEx: ex II 1 D, Ex ta IIIC T125 °C Da, IP6X, -20 °C < Ta < +60 °C (zones dust 20/21/22)
115048	ATEX 2014/34/EU, IECEx: ex II 3 G, Ex nA IIC T6 Gc, -20 °C < Ta < +60 °C (zone gaz 2)
-	Marking FACTORY MUTUAL (FM): I.S., CL I, II, III / DIV 1 / GP ABCDEFG N.I., CL I, II, III / DIV 2 / GP ABCDEFG; NIFW

Accessories

Compression load kit Stabiflex-F	Height adjustable load device LFC	Tension load kit MTPF	Compression load kit Rubberkit
			

Further suitable accessories you can find on our homepage under: <https://www.lorenz-messtechnik.de/english/products>