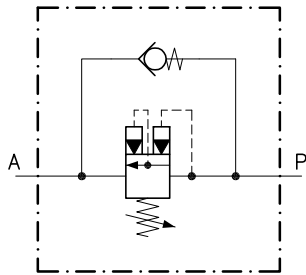


Technical features

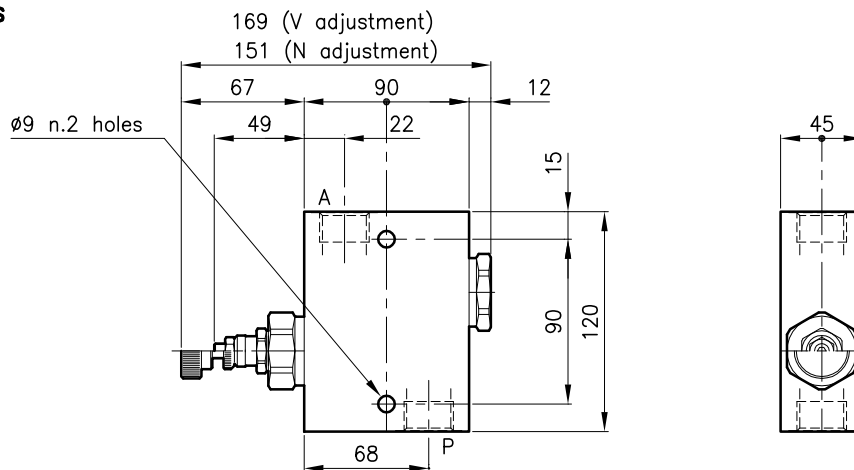
They are used to unload a line under pressure or as sequence valve.

At setting pressure achievement the valve opens itself allowing the fluid free-flow passage. When pressure drop under a value lower than 7 bar, the valve closes again. The annexed by-pass valve allows the reverse free-flow.



| | | |
|---|-------------------------------------|-----------|
| Valves | (For features see catalogue 04.020) | LPQ 50 |
| | (For features see catalogue 05.070) | CAE 50/P |
| Max. flow | (l/min.) | 160 |
| Max. pressure in P | (bar) | 420 |
| Max. pressure on A | (bar) | 350 |
| Max. reseal pressure | (bar) | 7 |
| Fluid viscosity range | (cSt) | 2.8 - 380 |
| Fluid temperature range | (°C) | -20 +80 |
| Mass | (kg) | 2.090 |
| Cracking pressure 95% of setting value | | |
| Cracking pressure defined with 1 l/min. | | |
| Hydraulic fluid; mineral oil HM and HV ISO 6074 | | |
| Recommended filtration; 19/15 ISO 4466 (25 μ absolutes) | | |
| Standard seals in Polyurethane and Buna N | | |

Dimensions



Ordering informations

LPQ 50/D-N-CSL 10-B12

Valve type

Standard springs

Type Setting range

D = 14 - 210 bar

Q = 105 - 420 bar

Adjustment type

N = Standard adjustment

V = Handknob adjustment

Version

Standard ports

B08 = G 1/2 ISO 228

B12 = G 3/4 ISO 228

Codes:

LPQ 50/D-N-CSL 10-B08 51 011 128

LPQ 50/Q-N-CSL 10-B08 51 011 129

LPQ 50/D-V-CSL 10-B08 51 011 130

LPQ 50/Q-V-CSL 10-B08 51 011 131

LPQ 50/D-N-CSL 10-B12 51 011 132

LPQ 50/Q-N-CSL 10-B12 51 011 133

LPQ 50/D-V-CSL 10-B12 51 011 134

LPQ 50/Q-V-CSL 10-B12 51 011 135

Only body codes:

Body type 50-CSL 10-B08 58 144 119

Body type 50-CSL 10-B12 58 144 120