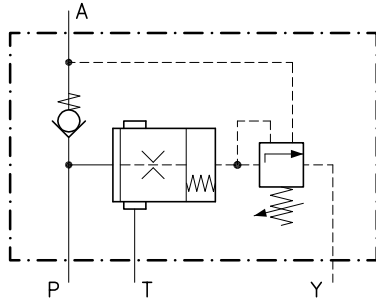


Technical features

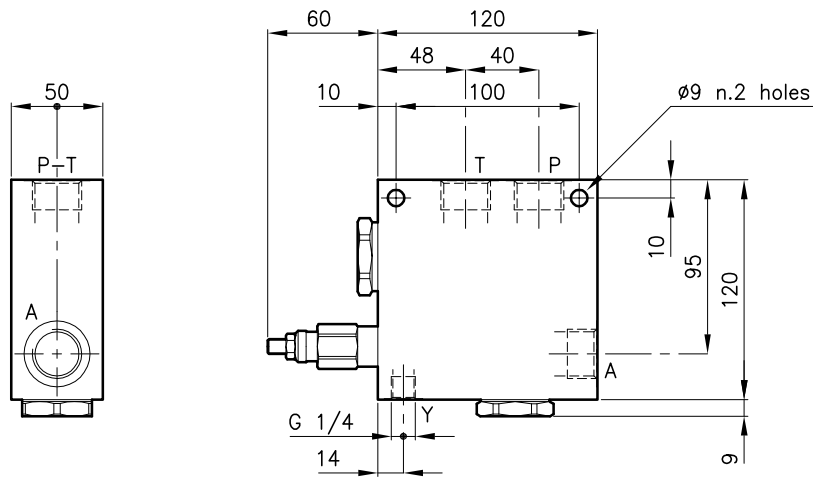
They are used to unload a pump once a certain pressure has been reached in the main circuit.

They are either used on accumulator circuit unload the pump when the accumulator charge pressure has been reached or in a two pump circuit to unload the low pressure pump.



Valves	(For features see catalogue 04.075)	LCS 20
	(For features see catalogue 11.020)	ELP 50/P1
	(For features see catalogue 05.070)	CAE 50/P
Max. flow	(l/min.)	135
Max. pressure in P	(bar)	315
Max. pressure on A	(bar)	420
Differential area	%	88 ± 1.5 %
Fluid viscosity range	(cSt)	2.8 - 380
Fluid temperature range	(°C)	-20 +80
Mass	(kg)	2.650
Hydraulic fluid; mineral oil HM and HV		ISO 6074
Recommended filtration; 19/15 ISO 4466 (25 μ absolutes)		
Standard seals in Polyurethane and Buna N		

Dimensions



Ordering informations

DPA 50/D-N-B12

Valve type

Standard springs (LCS 20)

Type Setting range

D = 10 - 210 bar

Q = 70 - 315 bar

Adjustment type

N = Standard adjustment

Standard ports

B08 = G 1/2 ISO 228

B12 = G 3/4 ISO 228

Codes:

DPA 50/D-N-B08 51 011 153
DPA 50/Q-N-B08 51 011 154

DPA 50/D-N-B12 51 011 156
DPA 50/Q-N-B12 51 011 157

Only body codes:

Body type 50-DPA-B08 58 144 136
Body type 50-DPA-B12 58 144 137