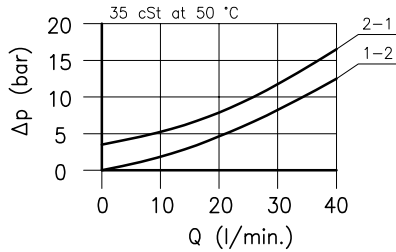
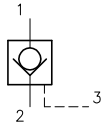
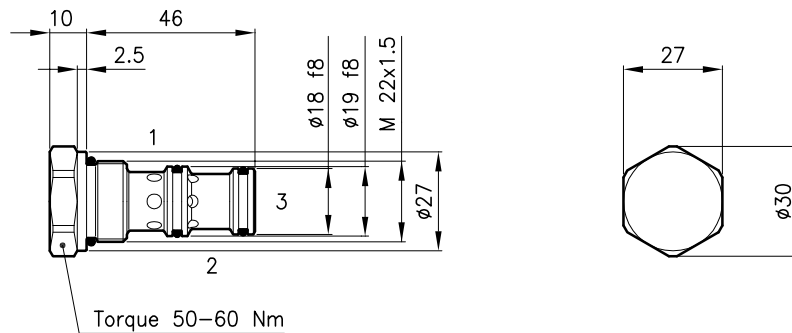


**Technical features**



Cavity (For dimensions see catalogue 17.000)	S 30/3
Nominal flow (l/min.)	30
Max. pressure (bar)	210
Pilot ratio	2.5:1
Pilot volume (cm <sup>3</sup> )	0.10
Fluid viscosity range (cSt)	2.8 - 380
Fluid temperature range (°C)	-20 +80
Mass (kg)	0.110
Hydraulic fluid; mineral oil HM and HV	ISO 6074
Recommended filtration; 19/15 ISO 4466 (25 μ absolutes)	
Standard seals in Polyurethane and Buna N	

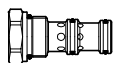
**Dimensions**



**Ordering informations**

**CAT 30/M-S**

**CAT 30** = Valve type



Standard spring

**M** = 3.5 bar

**S** = Without O-Ring on the pilot piston  
(Omit in Standard version)

Codes:

CAT 30/M	32 011 124
CAT 30/M-S	32 011 125
External seals kit	90 620 104

CAT 30 valves can be assembled on standard bodies 30-C3 series; for dimensions see catalogue 16.010