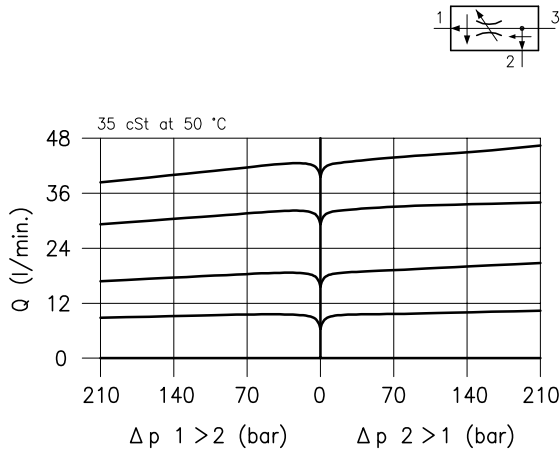
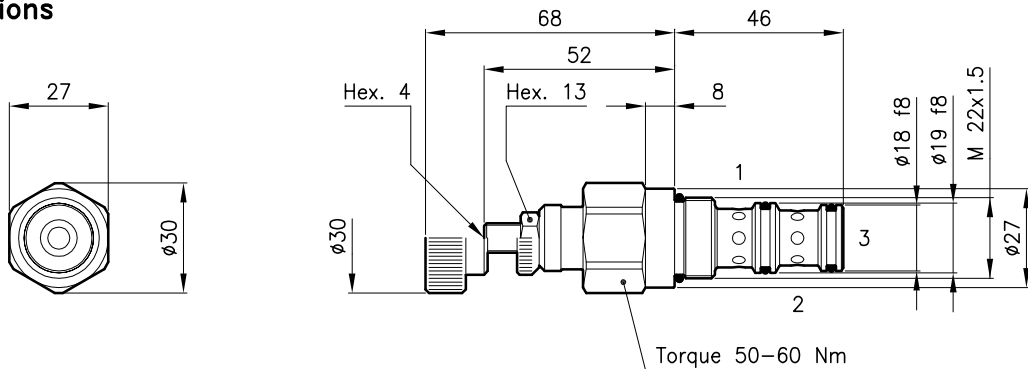


Technical features



Cavity (For dimensions see catalogue 17.000)	S 30/3	
Max. inlet flow (l/min.)	60	
Flow setting range ± 10% (l/min.)	type A	1.5 – 3.6
	type U	3 – 6
	type D	6 – 11
	type Z	8 – 16
	type T	13 – 25
	type Q	25 – 45
Max. pressure (bar)	315	
Fluid viscosity range (cSt)	2.8 – 380	
Fluid temperature range (°C)	-20 +80	
Mass (Standard adjustment type N) (kg)	0.200	
Hydraulic fluid; mineral oil HM and HV	ISO 6074	
Recommended filtration; 19/15 ISO 4466 (25 μ absolutes)		
Standard seals in Polyurethane and Buna N		

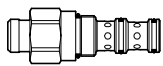
Dimensions



Ordering informations

DPC 30/D-N

DPC 30 = Valve type

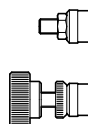


Flow setting range

- A** = 1.5 – 3.6 l/min
- U** = 3 – 6 l/min
- D** = 6 – 11 l/min
- Z** = 8 – 16 l/min
- T** = 13 – 25 l/min
- Q** = 25 – 45 l/min

Adjustment type

- N** = Standard adjustment
- V** = Handknob adjustment



Codes:

DPC 30/A-N	33 011 215
DPC 30/U-N	33 011 109
DPC 30/D-N	33 011 110
DPC 30/Z-N	33 011 247
DPC 30/T-N	33 011 111
DPC 30/Q-N	33 011 112
DPC 30/U-V	33 011 105
DPC 30/D-V	33 011 106
DPC 30/T-V	33 011 107
DPC 30/Q-V	33 011 108

External seals kit 90 620 104

DPC 30 valves can be assembled on standard bodies 30-C3 series; for dimensions see catalogue 16.010