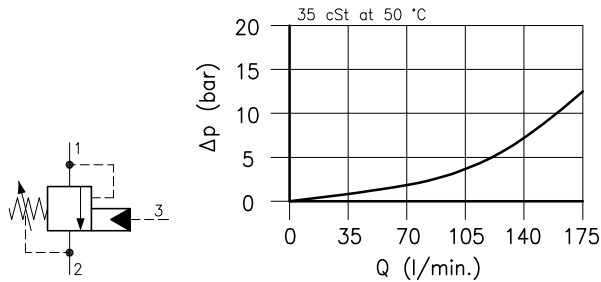


Technical features

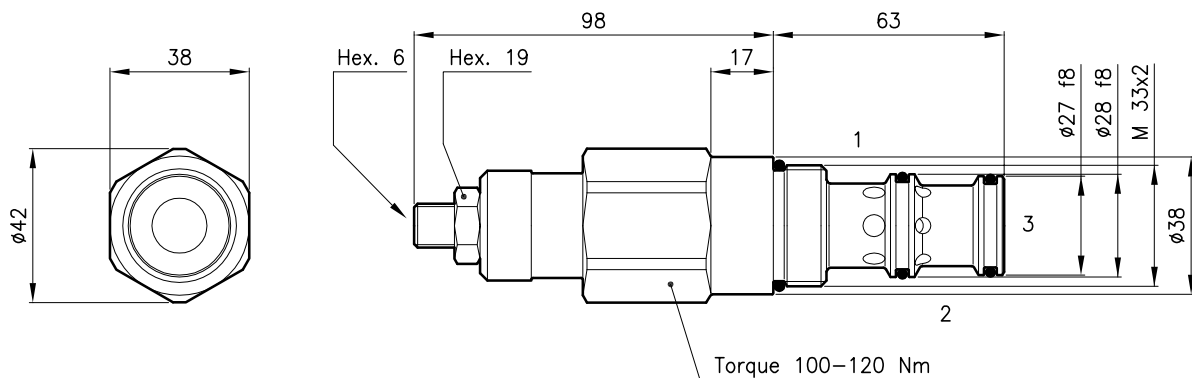


$$PP = \frac{(SP + BP) - LP}{3}$$

- PP = Pilot pressure
- SP = Setting pressure
- BP = Backpressure port 2
- LP = Load induced pressure

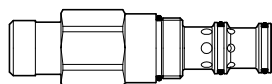
Cavity (For dimensions see catalogue 17.000)	S 50/3
Max. flow (l/min.)	160
Max. system pressure (bar)	270
Max. setting pressure (bar)	350
Pilot ratio	3:1
Fluid viscosity range (cSt)	2.8 - 380
Fluid temperature range (°C)	-20 +80
Mass (kg)	0.610
Cracking pressure 95% of setting value	
Reseat pressure 75% of setting value	
Standard setting obtained with 1 l/min.	
Hydraulic fluid; mineral oil HM and HV ISO 6074	
Recommended filtration; 19/15 ISO 4466 (25 μ absolutes)	
Standard seals in Polyurethane and Buna N	

Dimensions



Ordering informations

CMS 50 = Valve type



Standard springs

Type	Setting range	Factory set
U	10 - 105 bar	70 bar
D	70 - 210 bar	140 bar
T	140 - 350 bar	280 bar

Adjustment type

N = Standard adjustment

CMS 50/T-N



Codes:

CMS 50/U-N	54 011 104
CMS 50/D-N	54 011 105
CMS 50/T-N	54 011 106
External seals kit	90 620 107

CMS 50 valves can be assembled on standard bodies 50-C3 series; for dimensions see catalogue 16.010