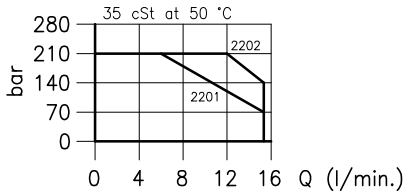
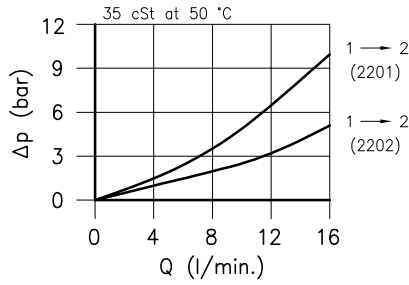
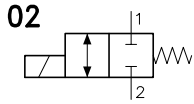
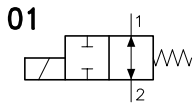


**Technical features**

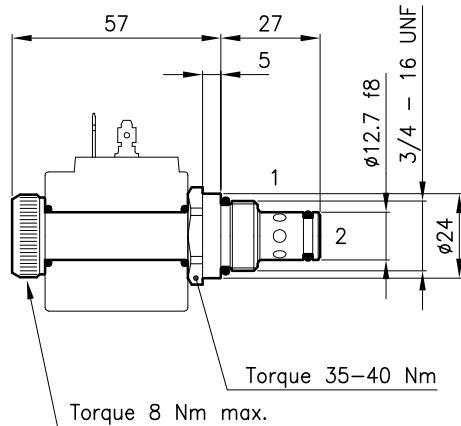
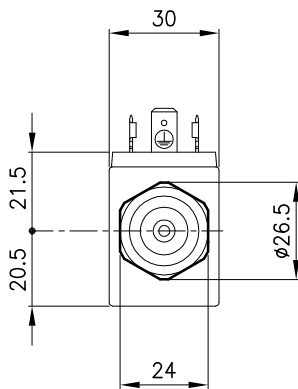


Use limits

With flow from 2 to 1  
limit the flow of 30%

Cavity (For dimensions see catalogue 17.002)	S 28/2
Max. flow (With flow from 1 to 2) (l/min.)	15
Max. pressure (bar)	210
Max. leakage (cm <sup>3</sup> /min.)	20
Response time (ms) It change in function of circuit, pressure, flow and fluid viscosity.	20 - 40 (Mean value)
Fluid viscosity range (cSt)	2.8 - 380
Fluid temperature range (°C)	-20 +80
Mass (kg)	0.120
Hydraulic flow; mineral oil HM and HV	ISO 6074
Recommended filtration; 19/15 ISO 4466 (25 μ absolutes)	
Standard seals in Polyurethane and Buna N	

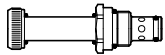
**Dimensions**



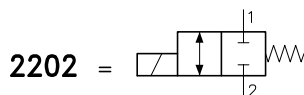
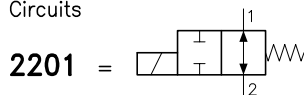
**Ordering informations**

**ETD 28/2201**

ETD 28/22.. = Valve type



Circuits



Codes:

ETD 28/2201 25 011 161

ETD 28/2202 25 011 162

External seals kit 90 620 112

ETD 28/22.. valves can be assembled on standard bodies 28-LO series; for dimensions see catalogue 16.010

On the ETD 28 valves must be assembled the Coils B28 series; for dimensions, features and codes see catalogue 09.902.